

REPLACEMENT PARTS

Ref. No.	Part No.	Description	Ref. No.	Part No.	Description
1	901-02-010-0558	#8-32 x 1/4" Rd Hd Screw (Early Models Only)	90	901-03-010-0793	1/2-13 x 1" Soc Hd Screw
2	424-04-031-0009	Cover (Early Models Only)	91	904-02-020-1705	1/2" Lockwasher
3	424-03-030-0006	Index Column, Incl.:	92	424-04-095-0002	Rear Trunnion Boss
	424-03-074-0002	Plastic Plug (Current Models Only)	93	901-04-160-1103	5/16-18 x 5/8" Hex Soc Set Screw
5	901-01-060-0605	5/16-18 x 1/2" Hex Hd Screw	94	931-01-011-4091	Knob
6	904-01-030-1643	Special Round Washer (Current Models Only)	95	1085982	Handle Assembly
6	904-10-091-2444	Special Square Washer (Early Models Only)	96	424-03-102-0005	Yoke
9	424-03-074-0001	Locating Pin	97	424-12-072-0015	Warning Label
10	951-02-011-3974	Miter Scale	98	902-01-040-1026	#8-16 Hex Nut
11	901-06-450-2250	#4 x 3/16" Drive Screw	99	424-03-132-0005	Bevel Scale
12	901-02-010-0509	1/4-20 x 1/2" Rd Hd Screw	100	901-02-010-0567	#6-32 x 1/4" Rd Hd Screw
13	438-01-004-0030	Cord Clamp	101	424-03-388-0001	Locating Housing, Incl.:
14	424-03-089-0007	Arm	102	928-01-041-5310	Spring
15	905-02-010-7105	1/4 x 1 1/4" Groove Pin	103	931-01-021-4099	Knob
16	901-03-030-8013	1/4-20 x 3/4" Flat Hd Screw	104	904-02-020-1704	3/8" Lockwasher
17	424-03-004-0006	Column Key	105	901-03-010-0784	3/8-16 x 1 1/4" Soc Hd Screw
18	904-02-020-1705	1/2" Lockwasher	106	904-01-031-2925	Special Washer
19	901-01-060-3120	1/2-13 x 1 3/4" Hex Hd Screw	107	424-04-027-0004	Bevel Lock Nut
20	424-03-030-0002	Column	108	901-01-060-3121	3/8-16 x 3 1/2" Hex Hd Screw
21	929-76-010-6318	Elevating Nut	109	931-01-021-4099	Knob
22	904-02-010-1703	5/16" Lockwasher	110	901-07-261-3234	Bevel Lock Rod
23	901-01-060-0649	5/16-18 x 1" Hex Hd Screw	111	904-01-010-1610	#9 Flat Washer
24	931-01-011-4091	Knob	112	424-04-075-0001	Pointer
25	1085978	Handle Assembly	113	901-02-010-0558	#8-32 x 1/4" Rd Hd Screw
26	1085979	Lock Screw	114	400-06-131-0014	Motor 5HP., 10, 230V.
27	901-04-150-0206	5/16-18 x 5/16" Hex Soc Set Screw	114	400-06-131-0015	Motor 5HP., 30, 230/460V.
28	424-03-017-0003	Spacer	114	400-06-131-0018	Motor 5HP., 30, 200V.
29	901-03-010-3345	1/4-20 x 1" Soc Hd Screw	115	424-04-095-0001	Front Trunnion
30	901-04-170-1104	1/4-20 x 1/4" Hex Soc Set Screw	116	901-03-010-0765	1/2-13 x 1 1/2" Soc Hd Screw
31	424-04-061-0001	Cable Support	117	904-02-020-1705	1/2" Lockwasher
32	904-01-010-1610	#9 Flat Washer	118	901-03-010-3308	1/2-13 x 1 3/4" Soc Hd Screw
33	424-04-075-0001	Pointer	119	902-04-010-1405	1/2-13 Wing Nut
34	901-02-010-0558	#8-32 x 1/4" Rd Hd Screw	120	904-01-010-1618	1/2" Flat Washer
35	424-03-388-0003	Index Housing, Incl.:	121	424-04-054-0005	Guard Clamp
36	928-01-041-5310	Spring	122	424-04-111-0010	Stud
37	901-06-450-8210	#00 x 1/8" Rd Hd Screw	123	904-07-010-5564	Fiber Washer
38	902-01-010-1300	5/16-18 Hex Nut	124	424-04-103-0001	Arbor Flange
39	931-01-021-4099	Knob	125	33-179	14" Combination Blade
40	905-01-010-6731	Roll Pin	126	424-04-360-0001	Arbor Nut, Incl.:
41	424-03-752-0027	Warning Label	127	901-03-010-8072	#6-32 Soc Hd Screw
42	961-03-010-2867	Rubber Grommet	128	955-03-010-0047	Wrench
43	424-03-088-0001	Stop Pin	140	424-03-354-0011	Blade Guard Assembly, Incl.:
44	905-02-010-7105	1/4 x 1 1/4" Groove Pin	141	901-04-260-1505	1/4-20 x 1/2" Thumb Screw
45	424-03-355-0010	Track Arm Assembly, Incl.:	142	901-04-260-1527	5/16-18 x 3/4" Thumb Screw
46	424-03-031-0011	Track End Cover - 4.500" Bolt Center (Current Models Only)	143	424-03-036-0001	Dust Spout
46A	424-03-031-0006	Track End Cover - 4.375" Bolt Center (Early Models Only)	144	424-02-752-0050	Caution Plate
47	901-03-010-0775	3/8-16 x 1" Soc Hd Screw	145	901-06-450-2252	#2 x 3/16" Drive Screw (Early Models Only)
48	904-02-020-1705	1/2" Lockwasher	146	406-03-137-0004	Nameplate
49	901-03-010-3308	1/2-13 x 1 3/4" Soc Hd Screw	147	901-06-450-2250	#4 x 3/16" Drive Screw
50	901-02-010-0541	#10-24 x 3/4" Rd Hd Screw	148	928-02-231-3394	Spring
51	902-03-020-2982	Speed Nut	149	901-09-011-2456	Stud
52	424-00-752-0001	Warning Label	150	424-03-054-0002	Rear Leaf
53	424-03-132-0003	Rip Scale	151	904-15-062-0269	Snap Ring
54	901-02-010-0558	#8-32 x 1/4" Rd Hd Screw	152	424-08-071-0001	Pin
55	1087358	Clamp Assembly, Incl.: (See Service Note A)	153	904-01-031-4993	Washer
55A	406-03-138-0005	Knob (Current Models Only, See Service Note A)	154	901-09-011-2455	Stud
56	931-02-991-4794	Knob, Incl.: (Early Models Only, See Service Note A)	155	424-03-054-0001	Front Leaf
57	901-04-150-0232	1/4-20 x 3/8" Hex Soc Set Screw (Early Models Only, See Service Note A)	156	424-04-408-0002	Anti-Kickback Rod, Incl.:
58	424-03-016-0002	Rubber Bumper	157	904-15-062-0269	Retaining Ring
59	424-03-108-0003	Rod	158	905-02-010-2489	1/8 x 7/8" Groove Pin
60	0906348	1-14 Hex Lock Nut	159	424-04-047-0002	Finger
61	1085980	Yoke Pin	160	424-04-071-0013	Pin
62	424-04-111-0016	Stationary Bearing Stud			
63	424-04-111-0017	Eccentric Bearing Stud			
64	424-04-379-0016	Bearing Retainer Assembly (Current Models Only, See Service Note B)			
65	920-10-151-4919	Bearing (Early Models Only, See Service Note B)			
66	424-04-104-0016	Spacer (Current Models Only, See Service Note B)			
67	901-02-010-0558	#8-32 x 1/4" Rd Hd Screw			
68	904-01-010-1610	#9 Flat Washer			
69	951-01-021-3951	Pointer			
70	424-03-388-0001	Locating Housing, Incl.:			
71	928-01-041-5310	Spring			
72	931-01-021-4099	Knob			
73	901-03-010-0784	3/8-16 x 1 1/4" Soc Hd Screw			
74	904-02-020-1704	3/8" Lockwasher			
75	904-02-020-1705	1/2" Lockwasher			
76	902-01-020-1227	1/2-20 Hex Jam Nut			
77	424-03-057-0001	Roller Head			
78	901-04-150-0202	1/4-20 x 1/2" Hex Soc Set Screw			
79	424-03-016-0002	Rubber Bumper			
80	901-02-010-0558	#8-32 x 1/4" Rd Hd Screw			
81	424-03-072-0004	Rip Lock Holddown Strip			
82	424-04-327-0002	Rip Lock, Incl.: (See Service Note A)			
82A	406-03-138-0005	Knob (Current Models Only, See Service Note A)			
83	931-02-991-4794	Knob, Incl.: (Early Models Only, See Service Note A)			
84	901-04-150-0232	1/4-20 x 3/8" Hex Soc Set Screw (Early Models Only, See Service Note A)			
85	424-04-031-0009	Rear Trunnion Cover			
86	901-02-010-0558	#8-32 x 1/4" Rd Hd Screw			
87	904-02-010-1703	5/16" Lockwasher			
88	901-03-010-0750	5/16-18 x 1" Soc Hd Screw			
89	424-03-016-0001	Rubber Bumper			

* NOT SHOWN ASSEMBLED

SERVICE NOTES:

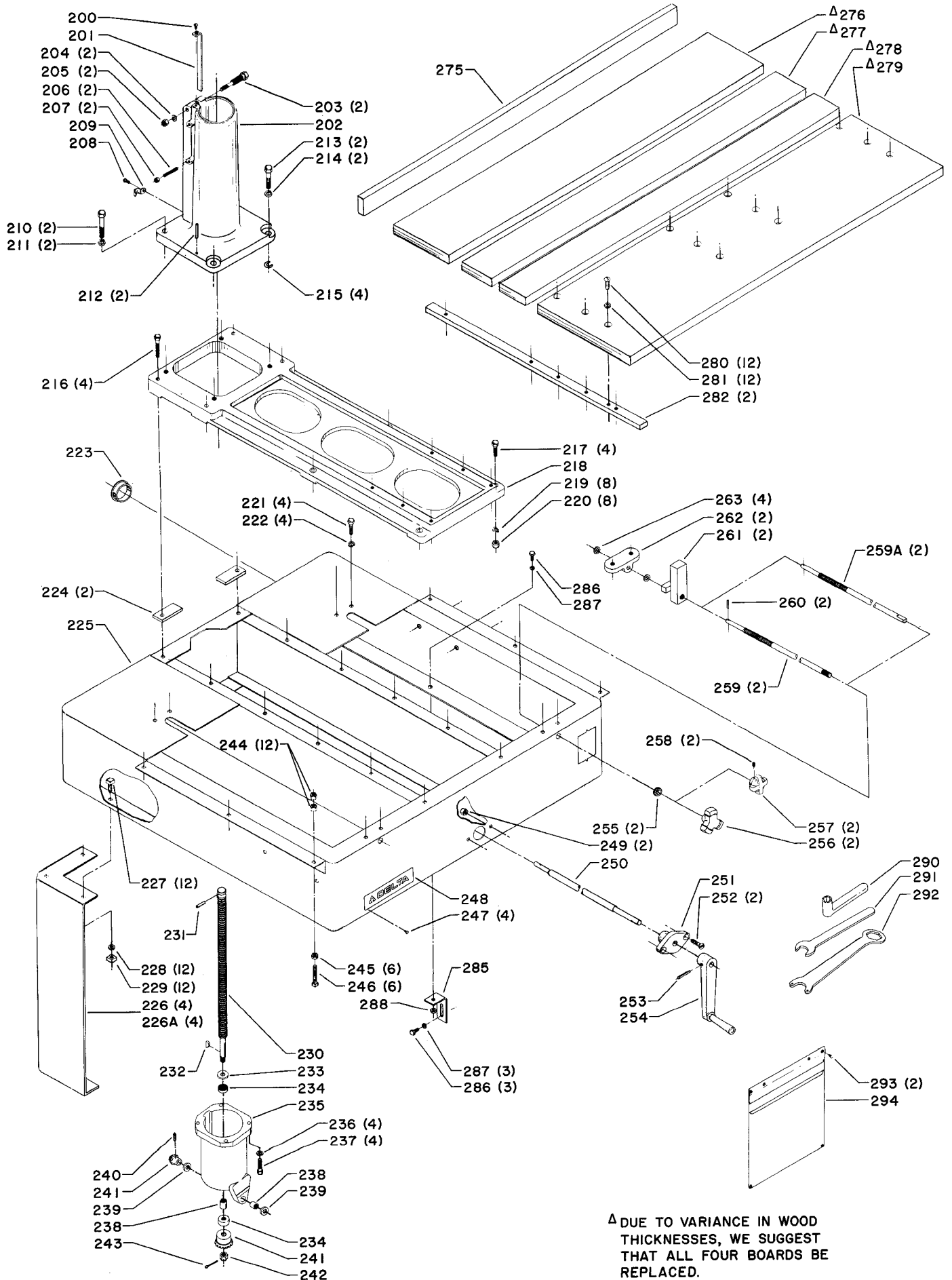
- A - Early model knobs were retained with a set screw, current model knobs are pressed on.
- B - All 14" Radial Arm Saws with serial numbers of 88B00500 and higher incorporated 4 bearing assemblies (Ref. No. 64) in place of the 4 old style bearings (Ref. No. 65). Also, the bearing studs (plain and eccentric) used with the new "Bearing Assemblies" are slightly different than the old style studs used with the old style 920-10-151-4919 bearings. The new studs must be used with the new style bearing assemblies but they may also be used for service purposes on old style heads with old style bearings.

Spacer (Ref. No. 66) is only used with new style bearing w/stud configuration.

The new style bearing assembly is not interchangeable with the old style bearing on an individual basis. That is, you can not replace one of 4 old style bearings on a rollerhead with one new style bearing assembly.

Old style bearing rollerheads may, however be retrofitted to the new style bearing assemblies provided all 4 old style bearings and all 4 old style studs are replaced as a set. For your convenience, a service retrofit kit is provided for conversion purposes under part no. 424-04-139-0001. See SI-193 for additional information.

14" RADIAL SAWS



△ DUE TO VARIANCE IN WOOD THICKNESSES, WE SUGGEST THAT ALL FOUR BOARDS BE REPLACED.

REPLACEMENT PARTS

Ref. No.	Part No.	Description	Ref. No.	Part No.	Description
200	901-02-010-0514	1/4-20 x 3/8" Rd Hd Screw	251	424-04-017-0001	Elevating Shaft Bearing
201	424-04-052-0001	Gi6	252	901-02-030-0417	3/8-16 x 1" Flat Hd Screw
202	1086642	Column Base Assembly, Incl.:	253	905-02-010-5045	3/16 x 1 1/2" Groove Pin
203	424-04-111-0002	Spreader Stud	254	424-03-333-0001	Crank Assembly
204	904-02-020-1704	3/8" Lockwasher	255	961-03-013-1452	Rubber Grommet
205	902-01-040-1026	3/8-16 Hex Nut	256	406-03-138-0008	Knob (Current Models Only, See Service Note D)
206	901-04-150-0297	5/16-24 x 1 3/4" Hex Soc Set Screw	257	931-02-991-4794	Knob, Incl.: (Early Models Only, See Service Note D)
207	902-01-010-1206	5/16-24 Hex Nut	258	901-04-150-0232	1/4-20 x 3/8" Hex Soc Set Screw (Early Models Only, See Service Note D)
208	901-02-010-0509	1/4-20 x 1/2" Rd Hd Screw	259	424-03-112-0005	Fence Clamp Screw (Current Models Only, See Service Note E)
209	438-01-004-0030	Cord Clamp	259A	424-03-112-0003	Fence Clamp Screw (Early Models Only, See Service Note E)
210	901-01-060-3117	1/2-13 x 2" Hex Hd Screw	260	905-01-010-2704	Roll Pin
211	904-02-020-1705	1/2" Lockwasher	261	424-03-327-0003	Fence Clamp Nut
212	905-02-010-7105	1/4 x 1 1/4" Groove Pin	262	424-03-014-0017	Fence Clamp Bracket
213	901-01-060-3120	1/2-13 x 1 3/4" Hex Hd Screw	263	904-01-033-1451	Special Washer
214	904-02-020-1705	1/2" Lockwasher	275	424-03-011-0004	Fence
215	424-04-083-0001	Shim Washer	*	424-03-311-0009	Table Board Assembly, Const of:
216	901-01-060-0646	3/8-16 x 2" Hex Hd Screw	276	424-03-011-0005	7" Table Board
217	901-01-060-0617	3/8-16 x 1 1/2" Hex Hd Screw	277	424-03-011-0003	3" Table Board
218	424-03-005-0002	Table Base	278	424-03-011-0002	3 1/2" Table Board
219	904-02-020-1704	3/8" Lockwasher	279	424-03-011-0001	11" Table Board
220	902-01-040-1026	3/8-16 Hex Nut	280	901-02-010-7502	3/8-16 x 1" Rd Hd Screw
221	901-01-060-0640	3/8-16 x 3/4" Hex Hd Screw	281	904-01-010-1615	3/8" Flat Washer
222	904-02-020-1704	3/8" Lockwasher	282	424-03-004-0001	Table Adjustment Bar
223	438-01-011-0020	Insulator	285	424-02-014-0025	LVC Box Mounting Bracket
224	424-04-004-0008	Reinforcing Strip	286	901-01-060-0611	1/4-20 x 1/2" Hex Hd Screw
225	424-03-305-0012	Frame Assembly	287	904-02-020-1704	1/4" Lockwasher
226	424-04-066-0003	Leg (Current Models Only, See Service Note C)	288	902-01-120-1034	1/4-20 Hex Nut
226A	424-04-066-0001	Leg (Early Models Only, See Service Note C)	290	424-03-117-0001	Roller Head Wrench
227	901-11-010-2375	3/8-16 x 1" Sq Hd Bolt	291	955-01-030-1488	Wrench
228	904-02-020-1704	3/8" Lockwasher	292	955-02-100-1492	Wrench
229	902-02-040-1307	3/8-16 Square Nut	293	400-06-079-0001	Retainer
230	424-03-112-0002	Elevating Screw	294	400-06-603-0001	Envelope
231	905-01-010-2730	3/16 x 1 1/2" Roll Pin			
232	927-01-010-2607	#3 Woodruff Key			
233	904-01-030-1649	Bearing Washer			
234	920-52-011-3924	Bearing			
235	424-03-013-0003	Column Housing			
236	904-02-020-1704	3/8" Lockwasher			
237	901-01-060-0648	3/8-16 x 1 1/4" Hex Hd Screw			
238	920-24-061-3962	Bearing			
239	920-76-021-3909	Thrust Bearing			
240	905-02-010-5030	3/16 x 3/4" Groove Pin			
241	424-02-351-0001	Gear Set			
242	902-01-150-1011	1/2-13 Hex Nut			
243	905-05-040-2106	1/8 x 1 1/4" Cotter Pin			
244	902-01-040-1026	3/8-16 Hex Nut			
245	902-01-010-5900	3/8-16 Hex Nut			
246	901-04-020-0324	3/8-16 x 2" Sq Hd Screw			
247	901-06-450-2250	#4 x 3/16" Drive Screw (Early Models Only)			
248	426-13-754-0001	Nameplate			
249	902-01-040-1026	3/8-16 Hex Nut			
250	424-03-106-0006	Elevating Shaft			

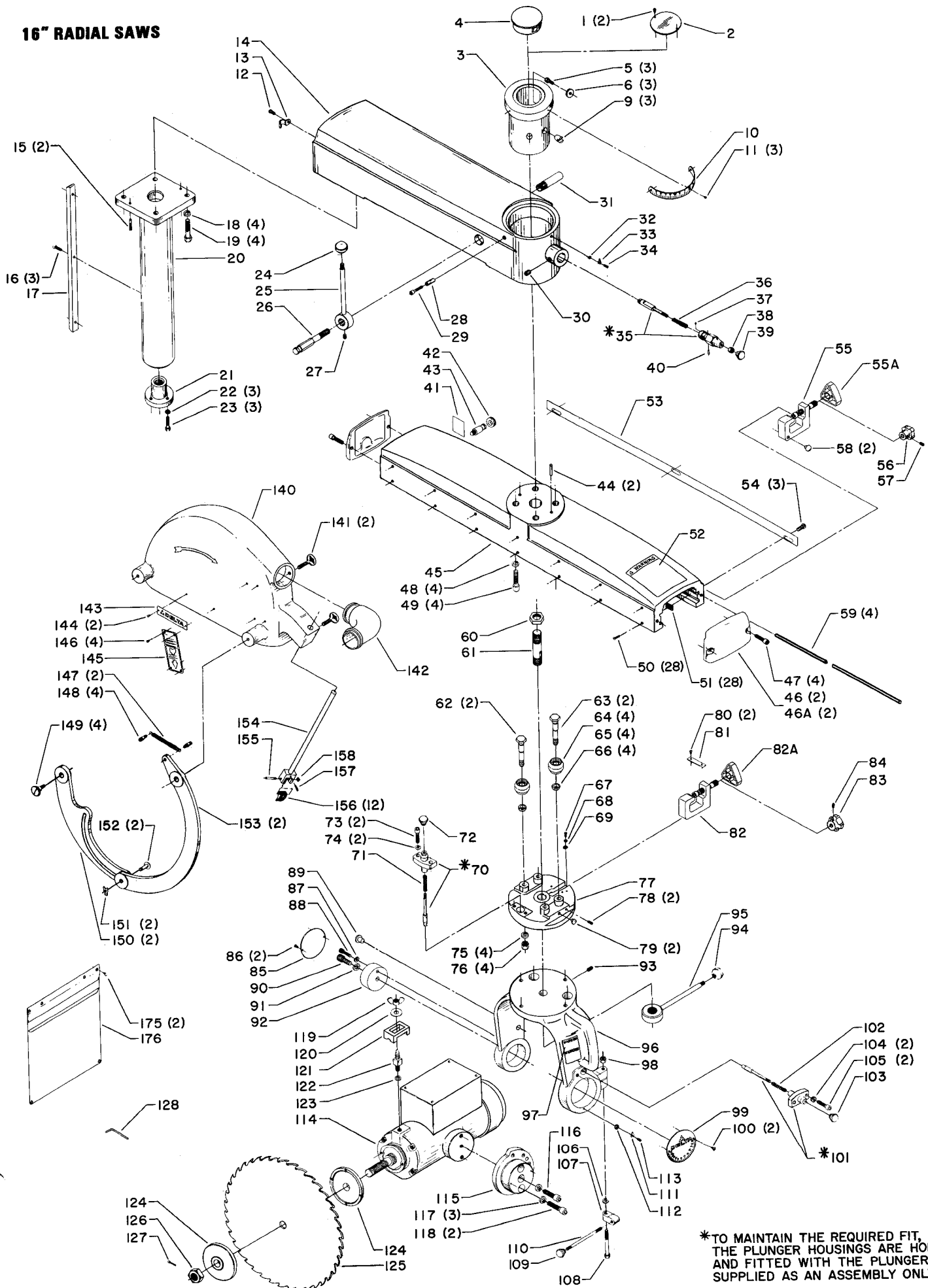
* NOT SHOWN ASSEMBLED

SERVICE NOTES

- C - Early model legs were tapered, current model legs are straight.
- D - Early model knobs were retained with a set screw, current model knobs are pressed on.
- E - Early model screw (knob end) is flat, current model screw (knob end) is knurled.

This parts list is provided to aid in obtaining service parts. Operational and maintenance information is contained in a separate owner's manual which is available through your local service outlet.

16" RADIAL SAWS



*TO MAINTAIN THE REQUIRED FIT,
THE PLUNGER HOUSINGS ARE HONED
AND FITTED WITH THE PLUNGER AND
SUPPLIED AS AN ASSEMBLY ONLY.

REPLACEMENT PARTS

Ref. No.	Part No.	Description	Ref. No.	Part No.	Description
1	901-02-010-0558	#8-32 x 1/4" Rd Hd Screw (Early Models Only)	90	901-03-010-0793	1/2-13 x 1" Soc Hd Screw
2	424-04-031-0009	Cover (Early Models Only)	91	904-02-020-1705	1/2" Lockwasher
3	424-03-030-0006	Index Column, Incl.:	92	424-04-095-0002	Rear Trunnion Boss
4	424-03-074-0002	Plastic Plug (Current Models Only)	93	901-04-160-1103	5/16-18 x 5/8" Hex Soc Set Screw
5	901-01-060-0605	5/16-18 x 1/2" Hex Hd Screw	94	931-01-011-4091	Knob
6	904-01-030-1643	Special Round Washer (Current Models Only)	95	1085982	Handle Assembly
6	904-10-091-2444	Special Square Washer (Early Models Only)	96	424-03-102-0005	Yoke
9	424-03-074-0001	Locating Pin	97	424-12-072-0015	Warning Label
10	951-02-011-3974	Miter Scale	98	902-01-040-1026	3/8-16 Hex Nut
11	901-06-450-2250	#4 x 3/16" Drive Screw	99	424-03-132-0005	Bevel Scale
12	901-02-010-0509	1/4-20 x 1/2" Rd Hd Screw	100	901-02-010-0567	#6-32 x 1/4" Rd Hd Screw
13	438-01-004-0030	Cord Clamp	101	424-03-388-0001	Locating Housing, Incl.:
14	424-03-089-0009	Arm	102	928-01-041-5310	Spring
15	905-02-010-7105	1/4 x 1 1/4" Groove Pin	103	931-01-021-4099	Knob
16	901-03-030-8013	1/4-20 x 3/4" Flat Hd Screw	104	904-02-020-1704	3/8" Lockwasher
17	424-03-004-0006	Column Key	105	901-03-010-0784	3/8-16 x 1 1/4" Soc Hd Screw
18	904-02-020-1705	1/2" Lockwasher	106	904-01-031-2925	Special Washer
19	901-01-060-3120	1/2-13 x 1 3/4" Hex Hd Screw	107	424-04-027-0004	Bevel Lock Nut
20	424-03-030-0002	Column	108	901-01-060-3121	3/8-16 x 3 1/2" Hex Hd Screw
21	929-76-010-6318	Elevating Nut	109	931-01-021-4099	Knob
22	904-02-010-1703	5/16" Lockwasher	110	901-07-261-3234	Bevel Lock Rod
23	901-01-060-0649	5/16-18 x 1" Hex Hd Screw	111	424-04-075-0001	Pointer
24	931-01-011-4091	Knob	112	904-01-010-1610	#9 Flat Washer
25	1085978	Handle Assembly	113	901-02-010-0558	#8-32 x 1/4" Rd Hd Screw
26	1085979	Lock Screw	114	400-06-131-0014	Motor 5HP., 10, 230V.
27	901-04-150-0206	5/16-18 x 5/16" Hex Soc Set Screw	114	400-06-131-0015	Motor 7-1/2HP., 30, 230/460V.
28	424-03-017-0003	Spacer	114	400-06-131-0018	Motor 5HP., 30, 200V.
29	901-03-010-3345	1/4-20 x 1" Soc Hd Screw	115	424-04-095-0001	Front Trunnion
30	901-04-170-1104	1/4-20 x 1/4" Hex Soc Set Screw	116	901-03-010-0765	1/2-13 x 1 1/2" Soc Hd Screw
31	424-04-061-0001	Cable Support	117	904-02-020-1705	1/2" Lockwasher
32	904-01-010-1610	#9 Flat Washer	118	901-03-010-3308	1/2-13 x 1 3/4" Soc Hd Screw
33	424-04-075-0001	Pointer	119	902-04-010-1405	1/2-13 Wing Nut
34	901-02-010-0558	#8-32 x 1/4" Rd Hd Screw	120	904-01-010-1618	1/2" Flat Washer
35	424-03-388-0003	Index Housing, Incl.:	121	424-04-054-0005	Guard Clamp
36	928-01-041-5310	Spring	122	424-04-111-0010	Stud
37	901-06-450-8210	#00 x 1/8" Rd Hd Screw	123	904-07-010-5564	Fiber Washer
38	902-01-010-1300	5/16-18 Hex Nut	124	424-04-103-0001	Arbor Flange
39	931-01-021-4099	Knob	125	33-183	16" Combination Blade
40	905-01-010-6731	Roll Pin	126	424-04-360-0001	Arbor Nut, Incl.:
41	424-03-752-0027	Warning Label	127	901-03-010-8072	#6-32 Soc Hd Screw
42	961-03-010-2867	Rubber Grommet	128	955-03-010-0047	Wrench
43	424-03-088-0001	Stop Pin	140	424-03-354-0012	Blade Guard Assembly, Incl.:
44	905-02-010-7105	1/4 x 1 1/4" Groove Pin	141	901-04-260-1528	5/16-18 x 1" Thumb Screw
45	424-03-355-0009	Track Arm Assembly, Incl.:	142	424-04-036-0001	Dust Spout
46	424-03-031-0011	Track End Cover - 4.500" Bolt Center (Current Models Only)	143	406-03-137-0004	Nameplate
46A	424-03-031-0006	Track End Cover - 4.375" Bolt Center (Early Models Only)	144	901-06-450-2250	#4 x 3/16" Drive Screw
47	901-03-010-0775	3/8-16 x 1" Soc Hd Screw	145	960-04-010-1887	Caution Plate
48	904-02-020-1705	1/2" Lockwasher	146	901-06-450-2250	#4 x 3/16" Drive Screw
49	901-03-010-3308	1/2-13 x 1 3/4" Soc Hd Screw	147	928-02-231-3394	Spring
50	901-02-010-0541	#10-24 x 3/4" Rd Hd Screw	148	901-09-011-2456	Stud
51	902-03-020-2982	Speed Nut	149	901-09-011-2455	Stud
52	424-00-752-0001	Warning Label	150	424-04-054-0011	Rear Leaf
53	424-03-132-0004	Rip Scale	151	904-15-210-7403	Retainer
54	901-02-010-0558	#8-32 x 1/4" Rd Hd Screw	152	424-01-111-0003	Stud
55	1087358	Clamp Assembly, Incl.:	153	424-04-054-0010	Front Leaf
55A	406-03-138-0005	(See Service Note G)	154	424-04-408-0002	Anti-Kickback Rod, Incl.:
56	931-02-991-4794	Knob (Current Models Only, See Service Note G)	155	424-04-071-0013	Pin
		Knob, Incl.:	156	424-04-047-0002	Finger
		(Early Models Only, See Service Note G)	157	905-02-010-2489	1/8 x 7/8" Groove Pin
57	901-04-150-0232	1/4-20 x 3/8" Hex Soc Set Screw (Early Models Only, See Service Note G)	158	904-15-062-0269	Retaining Ring
58	424-03-016-0002	Rubber Bumper	175	400-06-079-0001	Retainer
59	424-03-108-0005	Rod	176	400-06-603-0001	Envelope
60	0906348	1-14 Hex Lock Nut			
61	1085980	Yoke Pin	*	NOT SHOWN ASSEMBLED	
62	424-04-111-0016	Stationary Bearing Stud			
63	424-04-111-0017	Eccentric Bearing Stud			
64	424-04-379-0016	Bearing Retainer Assembly (Current Models Only, See Service Note H)			
65	920-10-151-4919	Bearing (Early Models Only, See Service Note H)			
66	424-04-104-0016	Spacer (Current Models Only, See Service Note H)			
67	901-02-010-0558	#8-32 x 1/4" Rd Hd Screw			
68	904-01-010-1610	#9 Flat Washer			
69	951-01-021-3951	Pointer			
70	424-03-388-0001	Locating Housing, Incl.:			
71	928-01-041-5310	Spring			
72	931-01-021-4099	Knob			
73	901-03-010-0784	3/8-16 x 1 1/4" Soc Hd Screw			
74	904-02-020-1704	3/8" Lockwasher			
75	904-02-020-1705	1/2" Lockwasher			
76	902-01-020-1227	1/2-20 Hex Jam Nut			
77	424-03-057-0001	Roller Head			
78	901-04-150-0202	1/4-20 x 1/2" Hex Soc Set Screw			
79	424-03-016-0002	Rubber Bumper			
80	901-02-010-0558	#8-32 x 1/4" Rd Hd Screw			
81	424-03-072-0004	Rip Lock Holddown Strip			
82	424-04-327-0002	Rip Lock, Incl.:			
82A	406-03-138-0005	Knob (Current Models Only, See Service Note G)			
83	931-02-991-4794	Knob, Incl.:			
		(Early Models Only, See Service Note G)			
84	901-04-150-0232	1/4-20 x 3/8" Hex Soc Set Screw (Early Models Only, See Service Note G)			
85	424-04-031-0009	Rear Trunnion Cover			
86	901-02-010-0558	#8-32 x 1/4" Rd Hd Screw			
87	904-02-010-1703	5/16" Lockwasher			
88	901-03-010-0750	5/16-18 x 1" Soc Hd Screw			
89	424-03-016-0001	Rubber Bumper			

SERVICE NOTES:

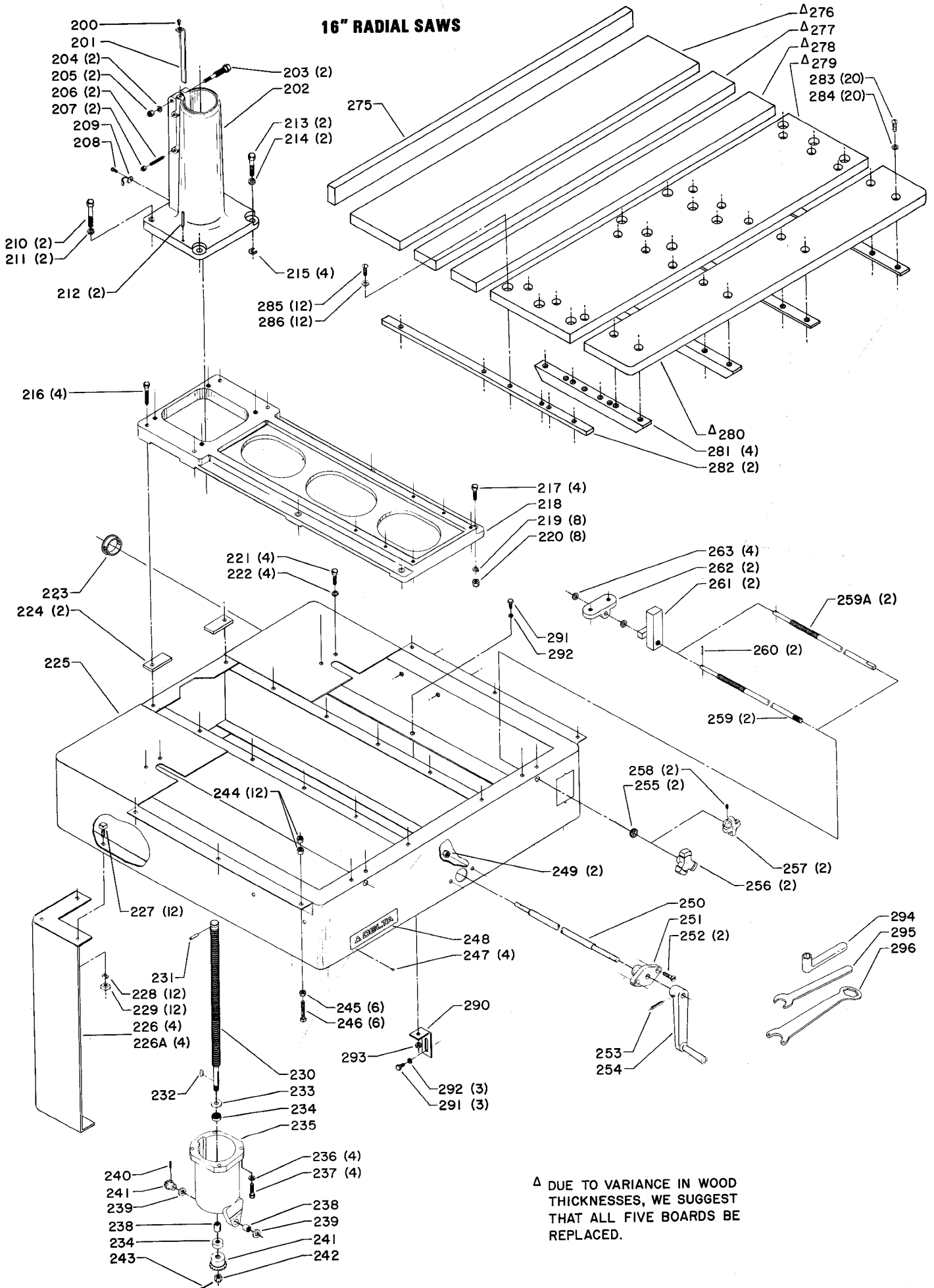
G - Early model knobs were retained with a set screw, current model knobs are pressed on.

H - All 16" Radial Arm Saws with serial numbers of 88800500 and higher incorporated 4 bearing assemblies (Ref. No. 64) in place of the 4 old style bearings (Ref. No. 65). Also, the bearing studs (plain and eccentric) used with the new "Bearing Assemblies" are slightly different than the old style studs used with the old style 920-10-151-4919 bearings. The new studs must be used with the new style bearing assemblies but they may also be used for service purposes on old style heads with old style bearings. Spacer (Ref. No. 66) is only used with new style bearing w/stud configuration.

The new style bearing assembly is not interchangeable with the old style bearing on an individual basis. That is, you can not replace one of the 4 old style bearings on a rollerhead with one new style bearing assembly.

Old style bearing rollerheads may, however be retrofitted to the new style bearing assemblies provided all 4 old style bearings and all 4 old style studs are replaced as a set. For your convenience, a service retrofit kit is provided for conversion purposes under part no. 424-04-139-0001. See ST-193 for additional details.

16" RADIAL SAWS



Δ DUE TO VARIANCE IN WOOD THICKNESSES, WE SUGGEST THAT ALL FIVE BOARDS BE REPLACED.

REPLACEMENT PARTS

Ref. No.	Part No.	Description	Ref. No.	Part No.	Description
200	901-02-010-0514	1/4-20 x 3/8" Rd Hd Screw	251	424-04-017-0001	Elevating Shaft Bearing
201	424-04-052-0001	Gib	252	901-02-030-0417	3/8-16 x 1" Flat Hd Screw
202	1086642	Column Base Assembly, Incl.:	253	905-02-010-5045	3/16 x 1 1/2" Groove Pin
203	424-04-111-0002	Spreader Stud	254	424-03-333-0001	Crank Assembly
204	904-02-020-1704	3/8" Lockwasher	255	961-03-013-1452	Rubber Grommet
205	902-01-040-1026	3/8-16 Hex Nut	256	406-03-138-0008	Knob (Current Models Only, See Service Note J)
206	901-04-150-0297	5/16-24 x 1 3/4" Hex Soc Set Screw	257	931-02-991-4794	Knob, Incl.: (Early Models Only, See Service Note J)
207	902-01-010-1206	5/16-24 Hex Nut	258	901-04-150-0232	1/4-20 x 3/8" Hex Soc Set Screw (Current Models Only, See Service Note J)
208	901-02-010-0509	1/4-20 x 1/2" Rd Hd Screw	259	424-03-112-0005	Fence Clamp Screw (Current Models Only, See Service Note K)
209	438-01-004-0030	Cord Clamp	259A	424-03-112-0003	Fence Clamp Screw (Early Models Only, See Service Note K)
210	901-01-060-3117	1/2-13 x 2" Hex Hd Screw	260	905-01-010-2704	Roll Pin
211	904-02-020-1705	1/2" Lockwasher	261	424-03-327-0003	Fence Clamp Nut
212	905-02-010-7105	1/4 x 1 1/4" Groove Pin	262	424-03-014-0017	Fence Clamp Bracket
213	901-01-060-3120	1/2-13 x 1 3/4" Hex Hd Screw	263	904-01-033-1451	Special Washer
214	904-02-020-1705	1/2" Lockwasher	275	424-03-011-0004	Fence
215	424-04-083-0001	Shim Washer	*	424-03-311-0010	Table Board Assembly, Const. Of:
216	901-01-060-0646	3/8-16 x 2" Hex Hd Screw	276	424-03-011-0005	7" Table Board
217	901-01-060-0617	3/8-16 x 1 1/2" Hex Hd Screw	277	424-03-011-0003	3" Table Board
218	424-03-005-0002	Table Base	278	424-03-011-0002	3 1/2" Table Board
219	904-02-020-1704	3/8" Lockwasher	279	424-03-011-0011	11" Table Board
220	902-01-040-1026	3/8-16 Hex Nut	280	424-03-011-0012	6" Table Board
221	901-01-060-0640	3/8-16 x 3/4" Hex Hd Screw	281	424-03-004-0009	Bar
222	904-02-020-1704	3/8" Lockwasher	282	424-03-004-0001	Table Adjustment Bar
223	438-01-011-0020	Insulator	283	901-02-010-0511	1/4-20 7/8" Rd Hd Screw
224	424-04-004-0008	Reinforcing Strip	284	904-01-010-1614	1/4" Flat Washer
225	424-03-305-0012	Frame Assembly	285	901-02-010-7502	3/8-16 x 1" Rd Hd Screw
226	424-04-066-0003	Leg (Current Models Only, See Service Note I)	286	904-01-010-1615	3/8" Flat Washer
226A	424-04-066-0001	Leg (Early Models Only, See Service Note I)	290	424-02-014-0025	LVC Box Mounting Bracket
227	901-11-010-2375	3/8-16 x 1" Sq Hd Bolt	291	901-01-060-0611	1/4-20 x 1/2" Hex Hd Screw
228	904-02-020-1704	3/8" Lockwasher	292	904-02-020-1704	1/4" Lockwasher
229	902-02-040-1307	3/8-16 Square Nut	293	902-01-120-1034	1/4-20 Hex Nut
230	424-03-112-0002	Elevating Screw	294	424-03-117-0001	Roller Head Wrench
231	905-01-010-2730	3/16 x 1 1/2" Roll Pin	295	955-01-030-1488	Wrench
232	927-01-010-2607	#3 Woodruff Key	296	955-02-100-1492	Wrench
233	904-01-030-1649	Bearing Washer			
234	920-52-011-3924	Bearing			
235	424-03-013-0003	Column Housing			
236	904-02-020-1704	3/8" Lockwasher			
237	901-01-060-0648	3/8-16 x 1 1/4" Hex Hd Screw			
238	920-24-061-3962	Bearing			
239	920-76-021-3909	Thrust Bearing			
240	905-02-010-5030	3/16 x 3/4" Groove Pin			
241	424-02-351-0001	Gear Set			
242	902-01-150-1011	1/2-13 Hex Nut			
243	905-05-040-2106	1/8 x 1 1/4" Cotter Pin			
244	902-01-040-1026	3/8-16 Hex Nut			
245	902-01-010-5900	3/8-16 Hex Nut			
246	901-04-020-0324	3/8-16 x 2" Sq Hd Screw			
247	901-06-450-2250	#4 x 3/16" Drive Screw (Early Models Only)			
248	426-13-754-0001	Nameplate			
249	902-01-040-1026	3/8-16 Hex Nut			
250	424-03-106-0006	Elevating Shaft			

* NOT SHOWN ASSEMBLED

SERVICE NOTES

- I - Early model legs were tapered, current model legs are straight.
- J - Early model knobs were retained with a set screw, current model knobs are pressed on.
- K - Early model screw (knob end) is a flat, current model screw (knob end) is knurled.

This parts list is provided to aid in obtaining service parts. Operational and maintenance information is contained in a separate owner's manual which is available through your local service outlet.